

ENGINEERING DATA



Smith &
Loveless, Inc.®

14040 Santa Fe Trail Drive
Lenexa, Kansas 66215-1284

PISTA® Grit Chamber
Chart 67A157
Arrangement Drawing 67C158
August 2012
Page N2

**PREFERRED SINGLE PISTA® GRIT REMOVAL
SYSTEM ARRANGEMENT WITH BYPASS MODELS
0.5A – 100.0A & 0.5B – 100.0B
DIMENSIONS FOR DRAWING 67C158
CHART NUMBER 67A157/A**

MODEL NUMBER	B		C	
	English	Metric (mm)	English	Metric (mm)
0.5A, 0.5B	0'-6"	152	3'-9"	1143
1.0A, 1.0B	1'-0"	254	4'-3"	1295
2.5A, 2.5B	1'-6"	457	5'-5"	1651
4.0A, 4.0B	2'-0"	610	6'-6"	1981
7.0A, 7.0B	2'-6"	762	7'-10"	2388
12.0A, 12.0B	3'-0"	914	9'-2"	2794
20.0A, 20.0B	4'-0"	1219	11'-11"	3632
30.0A, 30.0B	4'-6"	1372	13'-4"	4064
50.0A, 50.0B	5'-0"	1524	14'-8"	4470
70.0A, 70.0B	6'-0"	1829	17'-5"	5309
100.0A, 100.0B	8'-0"	2438	25'-0"	7620

ENGINEERING DATA



Smith &
Loveless, Inc.®

14040 Santa Fe Trail Drive
Lenexa, Kansas 66215-1284

PISTA® Grit Chamber
Chart 67A160
Arrangement Drawing 67C160
August 2012
Page N4

**PREFERRED DUAL PISTA® GRIT REMOVAL SYSTEM
ARRANGEMENT WITH BYPASS
MODELS 0.5A – 100.0A & 0.5B – 100.0B
DIMENSIONS FOR DRAWING 67C160
CHART NUMBER 67A160/A**

MODEL NUMBER	A		B		C	
	English	Metric (m)	English	Metric (mm)	English	Metric (mm)
0.5A, 0.5B	15'-2"	4.623	0'-6"	152	3'-9"	1143
1.0A, 1.0B	15'-8"	4.775	1'-0"	254	4'-3"	1295
2.5A, 2.5B	18'-2"	5.537	1'-6"	457	5'-5"	1651
4.0A, 4.0B	20'-8"	6.299	2'-0"	610	6'-6"	1981
7.0A, 7.0B	25'-2"	7.671	2'-6"	762	7'-10"	2388
12.0A, 12.0B	29'-8"	9.042	3'-0"	914	9'-2"	2794
20.0A, 20.0B	38'-8"	11.786	4'-0"	1219	11'-11"	3632
30.0A, 30.0B	43'-2"	13.157	4'-6"	1372	13'-4"	4064
50.0A, 50.0B	47'-8"	14.529	5'-0"	1524	14'-8"	4470
70.0A, 70.0B	56'-8"	17.272	6'-0"	1829	17'-5"	5309
100.0A, 100.0B	76'-0"	23.165	8'-0"	2438	25'-0"	7620

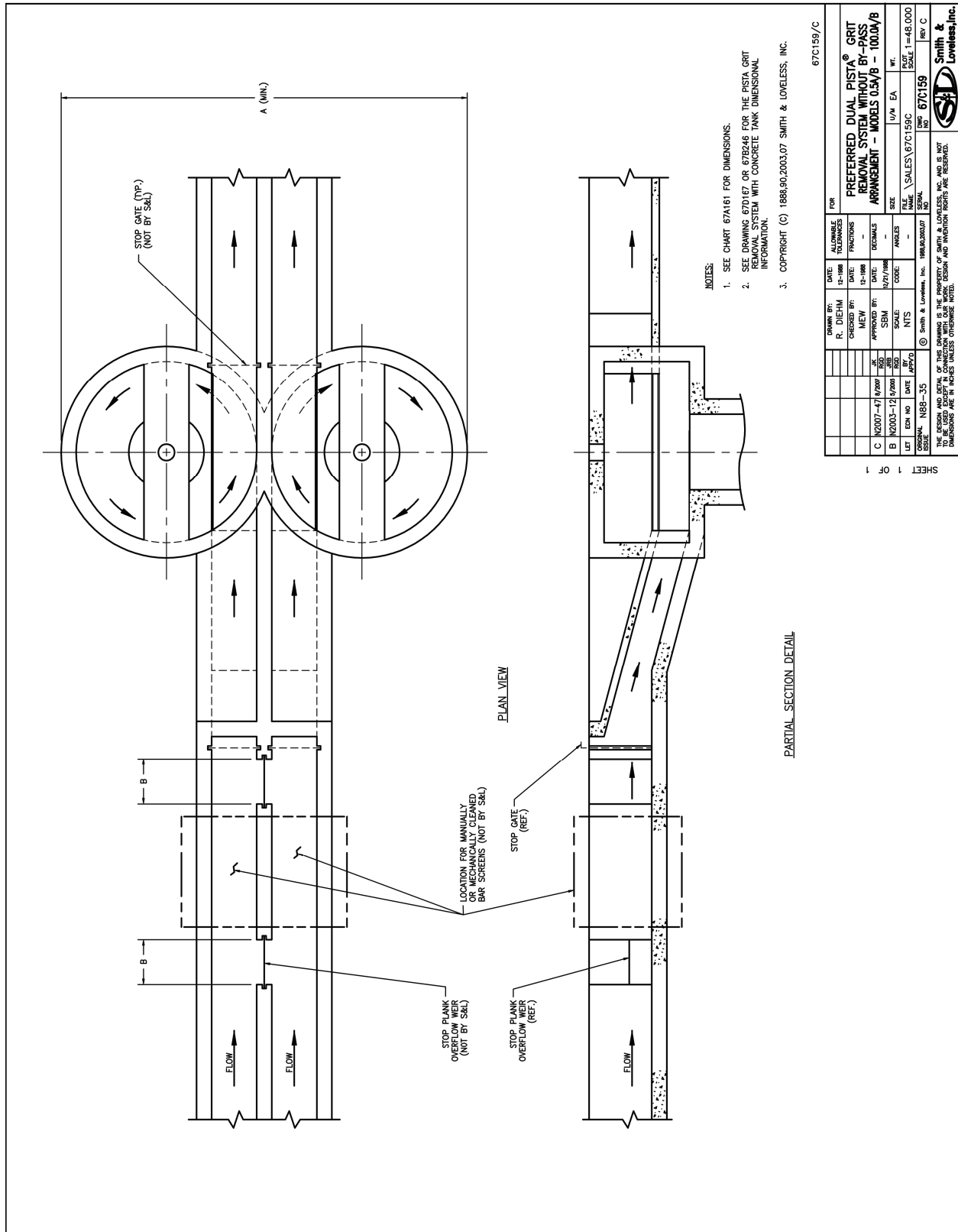
ENGINEERING DATA



Smith &
Loveless, Inc.®

14040 Santa Fe Trail Drive
Lenexa, Kansas 66215-1284

PISTA® Grit Chamber
Dual Unit Arrangement
without Bypass / Models 0.5A –
100.A & 0.5B – 100.0B
Arrangement Drawing 67C159
August 2012
Page N5



ENGINEERING DATA



Smith &
Loveless, Inc.®

14040 Santa Fe Trail Drive
Lenexa, Kansas 66215-1284

PISTA® Grit Chamber
Chart 67A161
Arrangement Drawing 67C159
August 2012
Page N6

**PREFERRED DUAL PISTA® GRIT REMOVAL SYSTEM
ARRANGEMENT WITHOUT BYPASS
MODELS 0.5A – 100.0A & 0.5B – 100.0B
DIMENSIONS FOR DRAWING 67C159
CHART NUMBER 67A161/A**

MODEL NUMBER	A		B	
	English	Metric (m)	English	Metric (mm)
0.5A, 0.5B	14'-0"	4.267	0'-6"	152
1.0A, 1.0B	14'-0"	4.267	1'-0"	254
2.5A, 2.5B	16'-0"	4.877	1'-6"	457
4.0A, 4.0B	18'-0"	5.486	2'-0"	610
7.0A, 7.0B	22'-0"	6.706	2'-6"	762
12.0A, 12.0B	26'-0"	7.925	3'-0"	914
20.0A, 20.0B	34'-0"	10.363	4'-0"	1219
30.0A, 30.0B	38'-0"	11.582	4'-6"	1372
50.0A, 50.0B	43'-0"	13.106	5'-0"	1524
70.0A, 70.0B	51'-0"	15.545	6'-0"	1829
100.0A, 100.0B	67'-0"	20.422	8'-0"	2438

